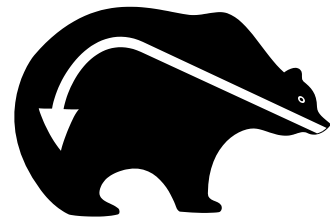


UTE MOUNTAIN TRIBAL PARK



INACCESSIBLE, CASA COLORADO, & CASA BLANCA CLIFF DWELLING TOUR

July 8, 2017

The Ute Mountain Tribal Park is offering to the public Inaccessible, Casa Colorado, and Casa Blanca Cliff Dwelling tour, a rarely visited area of the park. The Tours are scheduled to start at the entrance of Mesa Verde National Park (MVNP) from 8:30 a.m. to 5:00 p.m. The tour involves a drive thru Mesa Verde National Park and across to the Ute Mountain Reservation. The hiking time from the parking area to visit the cliff dwellings are approximately five hours hiking and two miles round trip. Visitors must be physically active for the tour and must provide their own back pack, drinking water, lunch, and wear comfortable gear.

\$35.00 per person/ 25 people maximum

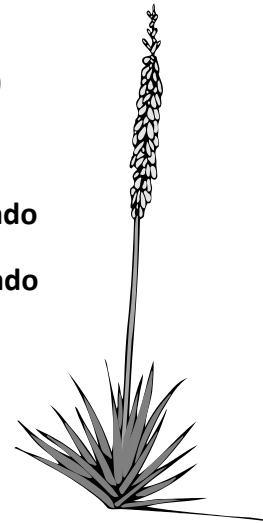
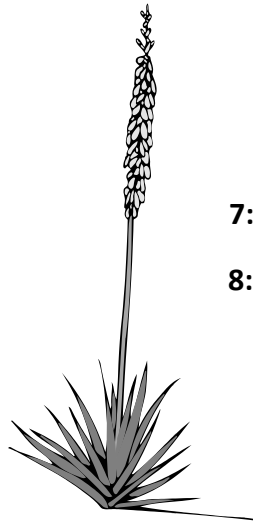
Transportation provided by UMTTP \$14.00 (per person)

Tour participant pick up locations:

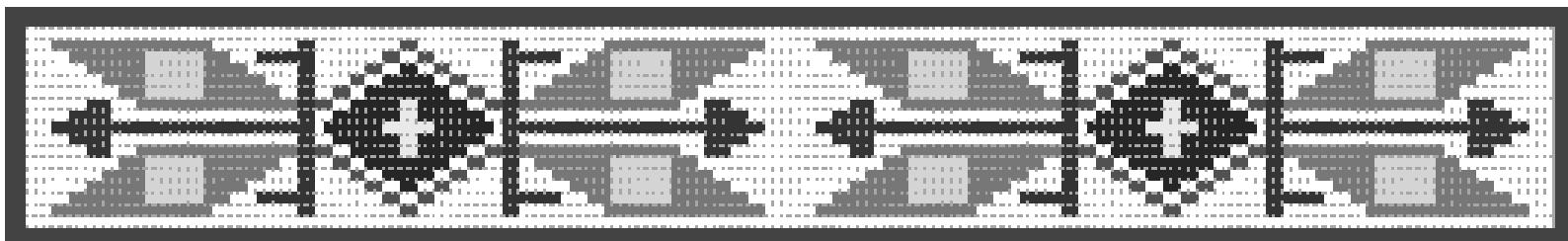
7:45 a.m. Ute Mountain Casino, Teepees, Towaoc, Colorado

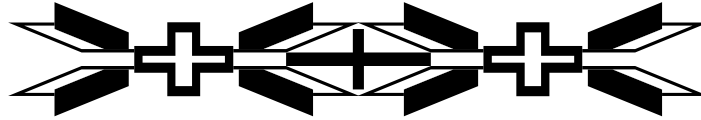
8:15 a.m. Ute Mountain Trading Company, Cortez, Colorado

8:30 a.m. Mesa Verde National Park (Entrance)



The tour fee is \$35.00 per person with an advance half deposit. The tour fee must be paid in full on the day of the tour. Children's rates do not apply to this special tour. A tour packet will be provided prior to the visit. The tour will be conducted weather pending. Reservations must be set at Ute Mountain Tribal Park Office by e-mail at utepark@fone.net or at phone numbers 970-565-3751 ext. 330 or 970-565-9653. Ute Mountain Tribal Park does not accept credit cards. Accepted are: cash, travellers checks, money orders, and personal checks from the state of Colorado. Visitors should have their own insurance. Ute Mountain Ute Tribe/ Ute Mountain Tribal Park and its employees are not liable for illnesses, accidents, thefts, and injuries.





UTE MOUNTAIN TRIBAL PARK TURNING RED TAIL HAWK TOUR To Morris Three Cliff Dwelling

AUGUST 12, 2017

The Ute Mountain Tribal Park presents to the public the Turning Red Tail Hawk Tour to Morris 3 Cliff Dwelling on August 12, 2017. The tour of Morris 3 Cliff Dwelling will be offered at 9:00 a.m. and 10:00 a.m. starting at the Ute Mountain Tribal Park Visitor Center.

There is physical activity which involves a climb of four ladders and 4.5 mile hike to Morris 3 Cliff Dwelling in Johnson Canyon. This tour has a limit of fifteen people and takes approximately 4 to 5 hours.

The starting location is at the Ute Mountain Tribal Park Visitor Center/ Museum. Tour participants must be at the center thirty minutes before the tour starts.



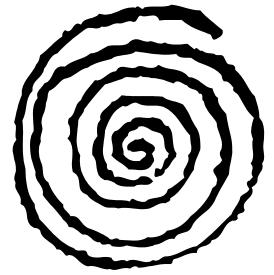
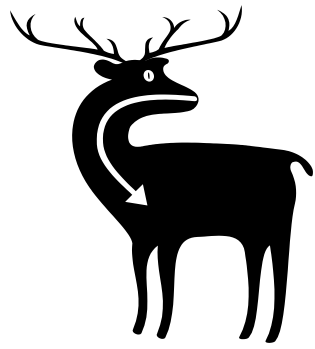
Tour Fee is \$35.00 per person
Transportation is free on a first-come first-served basis.
Each van seats up to 15 people.



*Tour area is not handicapped accessible.
Children rates do not apply to this special tour.
Reservations required.*

Note: Ute Mountain Tribal Park Visitor Center does not accept credit cards. Accepted are personal checks, cash, money order and travelers checks. For more information check our website at www.utemountaintribalpark.info, call 970-565-3751 ext. 330 or 970-565-9653. *Tours may be canceled due to bad weather.* Tours begin at the Ute Mountain Tribal Park Visitor Center/ Museum located at highway junction 160/491 (formerly highway junction 160/666). Visitors should have their own insurance. Ute Mountain Ute Tribe/ Ute Mountain Tribal Park and its employees are not liable for illnesses, accidents, thefts, and injuries.

- * Morris 3 is a Pueblo II – III Ancestral Pueblo site.
- * This site was excavated by Earl Morris in 1913.
- * The site was stabilized in the year 2008 by Chris Zeller, contract archaeologist for Ute Mountain Tribal Park, and Ute Mountain Tribal Park stabilization crew.
- * Morris 3, Archaeological site preservation project was funded by Colorado Historical Society, Ute Mountain Ute Tribe, and Ute Mountain Tribal Park.



SEVENTHTEEN ANNUAL UTE MOUNTAIN TRIBAL PARK OPEN HOUSE *MAY 27, 2017*

On May 27, 2017, from 8:00 A.M. to 4:00 P.M. the Ute Mountain Tribal Park will have an Open House starting at the Tribal Park Visitor Center/Museum at Highway Junction 160/491 (formerly Highway Junction 160/666), twenty miles south of Cortez, Colorado, and eight miles south of the Ute Mountain Casino.

The following events are scheduled for May 27, 2017

*** Porcupine House Ruin and Ute Pictographs Tour.** These tours begin at 9:10 A.M. to 3:00 P.M. The cost of this tour is \$29.00 per person.

***Ute Cradle Board Presentation at 8:15 a.m.**
Ute bead work demonstrations
Ute Fry Bread making & tasting

There will be no charge for transportation.
Each Tribal Park van holds up to fifteen people.
Transportation is based on a first-come first-served basis.
Visitors may provide their own transportation.

*Tours are **not** handicapped accessible.*
Children's rates do not apply with this tour special.

On display at the Tribal Park Visitor Center will be museum exhibits from 8:30 A.M. to 3:00 P.M.

- * Free refreshments will be available for visitors.
- * Participants will need to dress comfortably and provide their own drinking water and lunch for the tours.

Note: Ute Mountain Tribal Park Visitor Center does not accept credit cards. Accepted are personal checks, cash, and money orders. For more information check our website at www.utemountaintribalpark.info, call 970-565-3751 extension #330, or 970-565-9653. Tours may be canceled due to bad weather. Tours begin at the Ute Mountain Tribal Park Visitor Center/Museum located at Highway Junction 160/491 (formerly Highway Junction 160/666). Visitors should have their own insurance. Ute Mountain Ute Tribe/ Ute Mountain Tribal Park and its employees are not liable for illnesses, accidents, thefts, and injuries.

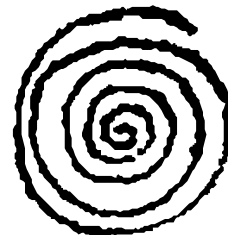
UTE MOUNTAIN TRIBAL PARK

P.O. BOX 109
TOWAOC, COLORADO
(970) 565-3751 EXT. 330
Direct phone: (970) 565-9653

Website: www.utemountaintribalpark.info
E-MAIL: utepark@fone.net

Tribal Park Visitor Center: Corner of Highway Junction 160/491
Main Tribal Park Office: 480 Sunset Blvd., Towaoc, Colorado

2017 TOUR INFORMATION AND COSTS



Come experience a trip back into time and learn a special Native American interpretation of the culturally diverse homelands of the Ute Mountain Ute Tribe. Spend time in our incomparable Ute Mountain Tribal Park with one of our knowledgeable Native American Ute tour guides. Guides interpret Ute* Indian History, Ute pictographs, geological land formations, and Ancestral Pueblo* petroglyphs, artifacts, and dwellings.

The *half-day* tours will visit Ancestral Pueblo petroglyphs, scenic lands, Ute pictographs panels, geological land formations, and surface sites. All sites on the half-day tour are within a short walking distance of the gravel road.

The *full day* trips require additional time and effort. It involves a three-mile walk on unpaved trails and a climb of five ladders to visit four well preserved canyon cliff dwellings in Lion Canyon. A round trip drive on gravel and dirt roads from the Tribal Park Visitor Center is 80 miles for the full day tour and 40 miles for the half-day tour. **Check in time is 8:30 A.M. and departure time into the park is 9:00 A.M.** Tours begin at the **Tribal Park Visitor Center/Museum** 20 miles south of Cortez, Colorado, at Highway Junction 160/491.

HALF DAY (EASY): 9:00 A.M. - 12:00 P.M. \$29.00 PER PERSON/PER DAY
(1:00 p.m. Half day tours can be arranged with prior notice)

FULL DAY (ACTIVE): 9:00 A.M. - 4:00 P.M. \$48.00 PER PERSON/PER DAY
(25 PEOPLE OR MORE WITHIN A GROUP \$30.00 PER PERSON)

SPECIAL TOURS TO REMOTE SECTIONS OF THE PARK: \$60.00 PER PERSON/ PER DAY
(*Minimum of four people, 5.6 miles of hiking & climbing on original Ancestral Pueblo trails.*)

TRANSPORTATION PROVIDED BY THE TRIBAL PARK: \$14.00 PER PERSON (Round trip from Tribal Park Visitor Center)
(*Prior reservations required Tour Participants 3 to 13 transported from Cortez, Co. @ \$20.00 per person round trip.*)

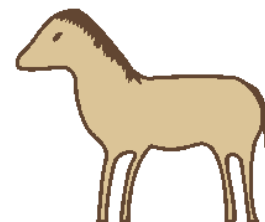


CAMPING IN THE TRIBAL PARK: \$15.00 PER-VEHICLE / PER DAY
PRIMITIVE CAMPGROUND

(A permit must be obtained prior to camping. Camp fire wood, drinking & utility water available at the campground.)

CABIN RENTAL: \$15.00 PER DAY
(*Located at the Tribal Park primitive campground*)

PRIVATE TOURS: \$100.00 PER PERSON



SPECIAL PRICES:

From 1st to 8th grade is \$10.00 per student and grades 9th to 12th are \$16.00 per student.

Rates for children within a family are: eight and under \$9.00 each and children 9 to 15 years of age are \$14.00 each.

No senior rates apply. A half tour fee deposit is required. Tour fee deposits are refundable with one week's notice before reserved date.

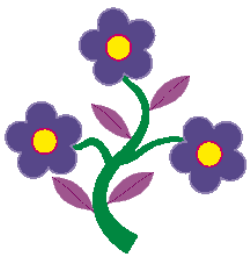
Military Discount: Active members of the military will be given a 50% discount with proof of military identification (discount for active military members only).

ESSENTIAL TOUR INFORMATION

Water or food is not available in the Park but water and soft drinks are available for purchase at the Tribal Park Visitor Center/Museum. Bring plenty of drinking water, lunch for the all day trip, insect repellent, sun screen, a hat and sturdy hiking shoes. Have a full tank of gasoline. **No dogs are allowed.**

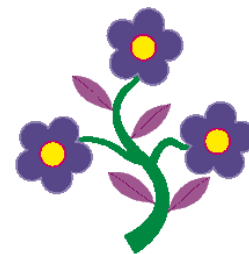
Professional photography is not allowed.

Please inform the tour guide of serious health problems. Visitors should have their own insurance. The meeting point for tours is at the Tribal Park Visitor Center at Junction of highways 160/491, 20 miles south of Cortez, Colorado. The Ute Mountain Tribal Park may cancel out tours due to weather. Credit cards, National Park Service's GOLDEN EAGLE PASSPORTS and other passes are not valid here.



**YOU MUST HAVE A UTE GUIDE TO ENTER THE
UTE MOUNTAIN UTE TRIBAL LAND. WE
DO NOT ALLOW SELF-GUIDED TOURS.**

*The Ute Mountain Tribal Park has the right to close off tour
areas for cultural or preservation reasons at anytime.
Ute Mountain Ute Tribe/ Ute Mountain Tribal Park and its employees
are not liable for illnesses, accidents, thefts, and injuries.*



*The Ute Mountain Utes are the Weenuche band of Utes, one of the seven original Ute bands that inhabited the entire state of Colorado. The Ute Mountain Utes presently reside on their reservation in southwestern Colorado.

*Ancestral Pueblo, or Anasazi, were people of the Pueblo culture. These Pueblo people resided in the four corners' areas (Colorado, New Mexico, Utah and Arizona) until about 1300 AD. The Puebloan tribes are presently living in the states of Arizona and New Mexico and are the descendants of the Ancestral Pueblo.